

C.O.W. Accession No. 1930.89
Object/Work porcelain bowl
Creation Date Qing Dynasty, Kangxi period, 1662
Artist not known

Artist's Dates 17th-18th century

Title/Name not known

Classification
decorative arts

Physical Description

--Blue and white porcelain bowl with landscape decoration. The sides are decorated with trees rising from rough rocks, with branches spreading out laterally. A whole flock of birds are roosting or taking off from the trees, and the open space between the larger trees is filled with the same kind of birds twisting and wheeling in flight. Just above them is a flowing band of cloud patterns with a crescent moon, near the edge of the dish. In the disk on the inside bottom of the bowl is a typical flower-bird painting in blue - a bit of hillside, a plum tree in blossom with a single bird perched on the limb and above bits of clouds. Inside the

State

Edition

Exhibition Loan History

Ceramics From the Permanent Collection, The College of Wooster, Burton D. Morgan Gallery, November 13-December 14, 2007

Related Textual Reference

This blue and white decorated porcelain bowl is an example of the popular bird and flower decorative motif of the early Qing Dynasty. Made at the Imperial porcelain factories at Jingdezhen in Jiangxi Province, this bowl is inscribed with the reign mark of the Emperor Kangxi. These porcelain factories flourished during the Ming Dynasty but their output declined in quantity and quality immediately after the Manchu invasion. Under Kangxi's patronage porcelain manufacture once again flourished and for the next 130 years some of the most exquisite porcelains were created to the delight of three successive Emperors. Per James Godfrey, ASIANetwork consultant, 4/24/06

Artist Nationality/Ethnicity Chinese



Materials porcelain

Measurements h: 3 7/8 inches
d: (at mouth) 8 1/2 inches
(base) 3 1/3 inches

Inscriptions/Marks

Current Location Ebert

Shelf/Drawer No. K6

Date Received 1930

Donor William Kelly

C.O.W. Accession No. 1979.2
Object/Work Delft plaque
Creation Date 19th century
Artist not known
Artist's Dates 19th century

Title/Name Delft Plaque

Classification
decorative arts

Physical Description

--blue and white plaque, oblong with elaborate fluted and raised floral rim
--in central medallion, a rustic genre scene (landscape); church at left, boats at right, shoreline, peasants, fishermen, animals and birds depicted; sky with cloud patches in background
--medallion convex and in baroque frame
--various tonalities of blue used from light blue to black, especially in the hanging wire threaded through
--underside has all white glaze with egg size concave area

State

Edition

Exhibition Loan History

Related Textual Reference

Artist Nationality/Ethnicity Dutch



Materials glazed pottery with metal wire hanger

Measurements 17 1/8 x 20 5/8 in.

Inscriptions/Marks

--beneath hanging hole, at center, the number 135 is stamped into the ware
--painted in blue above this are smudged B (-73-) R.R. and the number 560

Current Location Ebert

Shelf/Drawer No. C14

Date Received 1979

Donor William C. Douglass

C.O.W. Accession No. 1930.31
Object/Work vase
Creation Date 17th century?
Artist not known
Artist's Dates 17th century?

Title/Name Vase

Classification
decorative

Physical Description

A beautiful slender vase with blue and white decoration. The decoration in shades of dark and light blue is composed of a pair of dragons on opposing sides of the vase, twisting and rising up from near the base to the shoulder of the vase. Each dragon has its own treatment of the body and head positions. The entire background of the base body is covered with a cloud scroll pattern. A banana-leaf frieze decorates the slender neck of the vase. On the base, divided by a light blue line from the body pattern, is a band of interlocking scroll in harmony with the figures above. An unusual feature is the absence of the identifying characters usually found

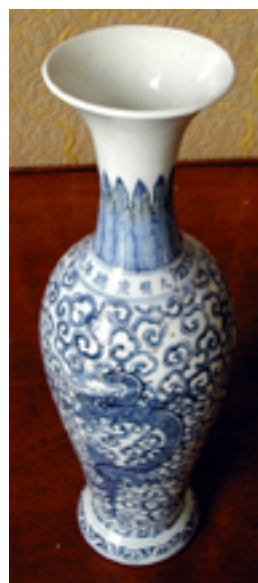
State

Edition

Exhibition Loan History

Related Textual Reference

Artist Nationality/Ethnicity Chinese



Materials porcelain

Measurements diameter (at mouth): 3 in./ (at shoulder): 4 in./
(at base): 3 3/16 in.
H: 13 in.

Inscriptions/Marks

It reads "made in the Hsuan-Te (reign) year of the great Ming (dynasty)."

Current Location Ebert

Shelf/Drawer No. C1

Date Received 1930

Donor William Kelly

C.O.W. Accession No. 1979.1
Object/Work Platter
Creation Date 18th-19th century
Artist not known
Artist's Dates 18th-19th century (Ch'ing)

Title/Name "Fitzhugh"

Classification
decorative arts

Physical Description

Export blue and white underglaze blue porcelain; oblong shape; pared-off corners marked by large scalloped edge, with 1 1/4 in. geometric, double-banded linear design all round in blue. Interior well is ovate with a landscape scene: a rocky island with pagoda, trees on top, landing stairs, and a bridge to the right; boats, reeds are seen on water in foreground. This scene is framed by a 3/4 in. band of blue and white linear decor at the point where rim rises. Base unglazed. No marking.

State

Edition

Exhibition Loan History

Related Textual Reference

Artist Nationality/Ethnicity Chinese (Fuchow, Fukien Province)



Materials porcelain, blue and white glazed

Measurements L: 8 1/2 in. (52 cm)
W: 4 11/16 in (42.2 cm)
H: 1 5/8 in (4.2 cm)

Inscriptions/Marks

Current Location Ebert

Shelf/Drawer No. K5

Date Received 1979

Donor Dr. William C. Douglass